

Thursday, March 29th, 2007

Requested by:

Mr. Yves Bérubé
Premier Tech Environnement
1 Ave Premier
Rivière-du-loup, Quebec, Can.
418-867-8883

Products covered: SJE Vertical Masters[®] and SJE Vertical Master II[®]

Mr. Bérubé,

Although the SJE Rhombus Vertical Masters[®] and Vertical Master II[®] float switches were not design to be continuously submerged; it would defeat the purpose of its use, their design allows it to withstand temporary submersion.

Due to the nature of your request we will define "Submersion" and "Temporary".

MAXIMUM SUBMERSION: 5 feet (1.5m) submergence.

MAXIMUM SUBMERSION TIME: 72 hours continuous.

Other pertinent technical information:



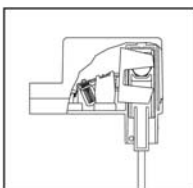
CABLE: flexible 16 gauge, 2 conductor (UL, CSA) SJOW or SJTOW, water-resistant (CPE)

MOUNTING BRACKET & HOSE CLAMP: stainless steel

LIFT ROD: injection molded acetal plastic

FLOAT STOP: neoprene

SWITCH AND FLOAT HOUSING: high impact, corrosion resistant, PVC housing for use in sewage and non-potable water up to 125[°]F (52[°]C)



Overall dimensions:

12 inch high x 5 inch x 3 inch wide (30.5 cm high x 12.7 cm x 7.6 cm wide)

Switch housing dimensions (excluding cable entrance):

2 inch high x 2.8 inch wide (5 cm high x 7.1 cm wide)

Float housing dimensions:

2.3 inch high x 2.7 inch wide (5.8 cm high x 6.9 cm wide)

We hope that this technical information about our products gets to the point of your request.

Remaining at your disposition for all technical requests,

The SJE Rhombus Engineering Team.